



Temporary Power Distribution

TECHNICAL DATA SHEET

LBC1600A



Our Load Bank Connection (LBC) can be fitted inside or outside of a building, allowing a safe and quick connection of a testing load bank to your back-up generator when it is undergoing testing/maintenance.

TECHNICAL DATA

Incomer	Outgoing	Dimensions	Weight
Fully rated copper connections (hardwired)	4 x 500A 3P+N+E Powerlock source	H1835 x W950 X D400 (mm)	150 - 250kg

WARRANTY AND CERTIFICATION

All temporary power distribution equipment supplied is manufactured by IDE in the UK and is rigorously tested to BS 7671 standards, with 12-month certification provided as standard.

Our distribution systems are built using components that conform to the following international standards:

- > EN 60309 – Plugs, socket-outlets, and couplers for industrial purposes
- > EN 60529 – Degrees of protection provided by enclosures (IP code)
- > EN 60947 – Low-voltage switchgear and controlgear

All components and assemblies are covered by a 24-month manufacturer's warranty, ensuring reliability, safety, and regulatory compliance throughout the deployment period.

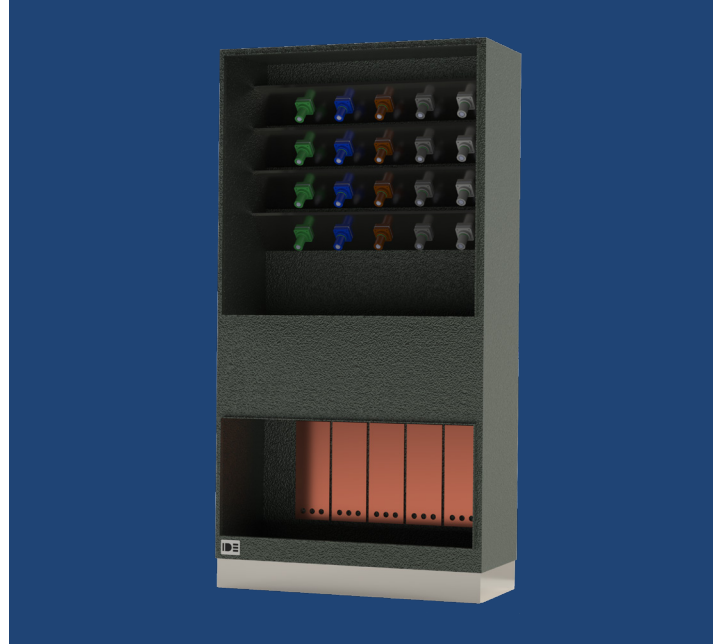




Temporary Power Distribution

TECHNICAL DATA SHEET

LBC1600A



PRODUCT FEATURES

- ✔ Powerlock type (Source) connections for a quick easy connection
- ✔ Powder coated Stainless Steel enclosure
- ✔ Floor standing steel enclosure fitted with M12 fixing points
- ✔ Slim Design

We supply solutions which can be connected to your load bank when the back-up generator is undergoing testing/maintenance. Regular load banking is strongly advised to ensure that your generator will perform when the need arises.

T: 01543 574 111
E: enquiries@idesystems.co.uk
www.idesystems.co.uk